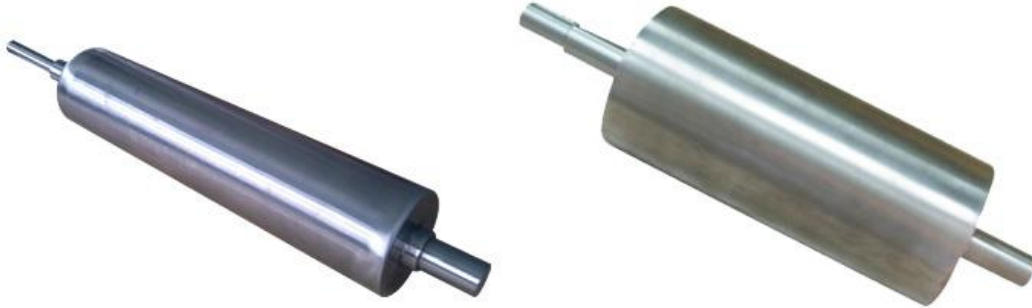


Magnetic Pulley Separator

The operating principle of magnetic pulley separator is similar to that of a drum magnet, which is also designed for continuous self-cleaning of product flows. Magnetic pulley is generally installed at the end of conveyor belt to separate the iron contaminant from material.



Construction:

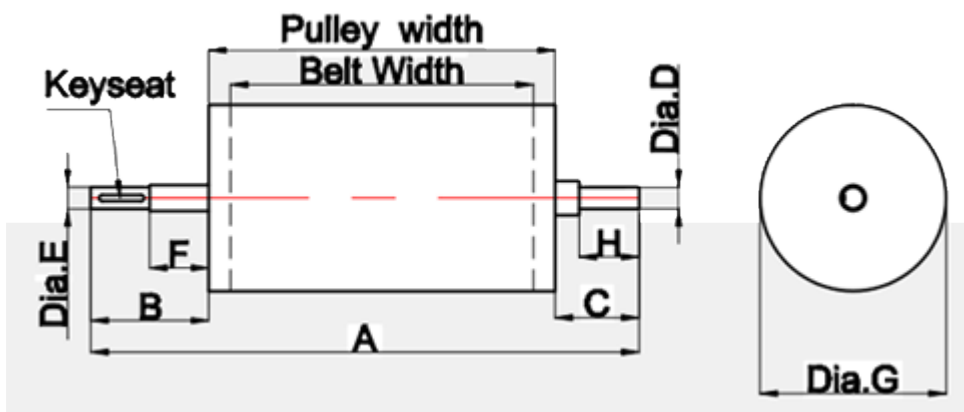
The operating principle of magnetic pulley is similar to that of a magnetic drum, which is also designed for continuous self-cleaning of metal. It is generally installed at the end of conveyor belt to separate the iron contaminant from material.

When product is conveyed along the belt to the head pulley and enters the magnetic field where metal contaminants are attracted and held tightly to the belt surface. As the belt is conveyed around the magnetic pulley, metal contaminants are held in place until they pass through the magnetic field where they are safely discarded and separated from the clean product.

The shafts of the roller can be machined to suit existing bearing detail, ensuring ease of installation and minimal downtime.

Features:

1. Material of shell: 100% SS304 outside.
2. Magnet: Either rare earth magnet or ferrite magnet.
3. Magnetic strength: multiform standard magnetic strength.
4. Applicable material: Bulk process like mineral, wood chip, recyclables, etc.
5. Customer designs and specifications can be fulfilled.



		Dimensions (mm)			
Series	Part#	dia. G	Pulley Width	dia. E	dia. D
		200	SM-MPS 2140	215 (8.5")	400
	SM-MPS 2150	215 (8.5")	500	30	40
	SM-MPS 2160	215 (8.5")	600	30	40
	SM-MPS 2170	215 (8.5")	700	30	40
	SM-MPS 2180	215 (8.5")	800	30	40
	SM-MPS 2190	215 (8.5")	900	30	40
	SM-MPS 21100	215 (8.5")	1000	30	40
300	SM-MPS 3140	315 (12.5")	400	40	50
	SM-MPS 3150	315 (12.5")	500	40	50
	SM-MPS 3160	315 (12.5")	600	40	50
	SM-MPS 3170	315 (12.5")	700	40	50
	SM-MPS 3180	315 (12.5")	800	40	50
	SM-MPS 3190	315 (12.5")	900	40	50



72 Fairbanks #100, Irvine, CA 92618, USA
Tel: (949) 4078902 Fax: (949) 812 6690

	SM-MPS 31100	315 (12.5")	1000	40	50
	SM-MPS 4040	400 (15.75")	400	50	60
	SM-MPS 4050	400 (15.75")	500	50	60
	SM-MPS 4060	400 (15.75")	600	50	60
400	SM-MPS 4070	400 (15.75")	700	50	60
Series	SM-MPS 4080	400 (15.75")	800	50	60
	SM-MPS 4090	400 (15.75")	900	50	60
	SM-MPS 40100	400 (15.75")	1000	50	60