

Rotary Magnetic Separators

Rotary magnetic separators are used to remove the ferrous contaminants from the material that is apt to caking and bridging. These materials, like power with high moisture which is somewhat viscous, are easy to cake using fixed magnetic separators. However, with rotary magnetic separators, the rotary action will scatter the material and make more contaminants attracted on the rods.



Construction:

Stanford rotary grate magnetic separator consists of a cyclic magnetic bar group (grate) and a housing from outside. A motor is necessary to drive the magnetic separation rods to rotate. This unit embodies unapproachable capacity compared to other fixed separators. What's more, magnets are manufactured in China while motors of these separators can be imported.

Features:

1. Finishing: Fine polishing and good welding to meet food grade.
2. Material: All the tube, frames and housing are stainless steel with seamless steel tube.
3. Magnet: High strength rare-earth magnet.
4. Working temperature: Standard rotary magnetic separators' working temperature is $\cong 80^{\circ}\text{C}$, but if high temperature is required, we can offer up to 350°C to meet your special requirements.
5. Type of mounting: Round and square, flange and quick release clamp are decided by customers.
6. As rare earth magnets are extremely powerful and tramp metal is very difficult to remove by hand, we are ready to offer you an easy-clean design.
7. Motor: Please offer requirements like IP, voltage, frequency if possible.
8. Customer designs and specifications can be fulfilled.

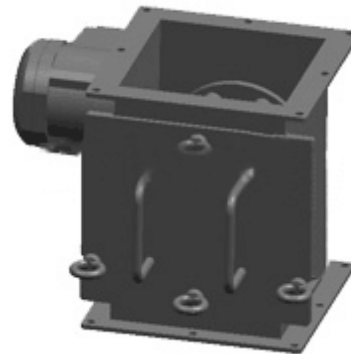
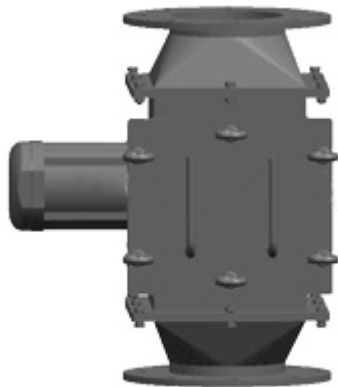
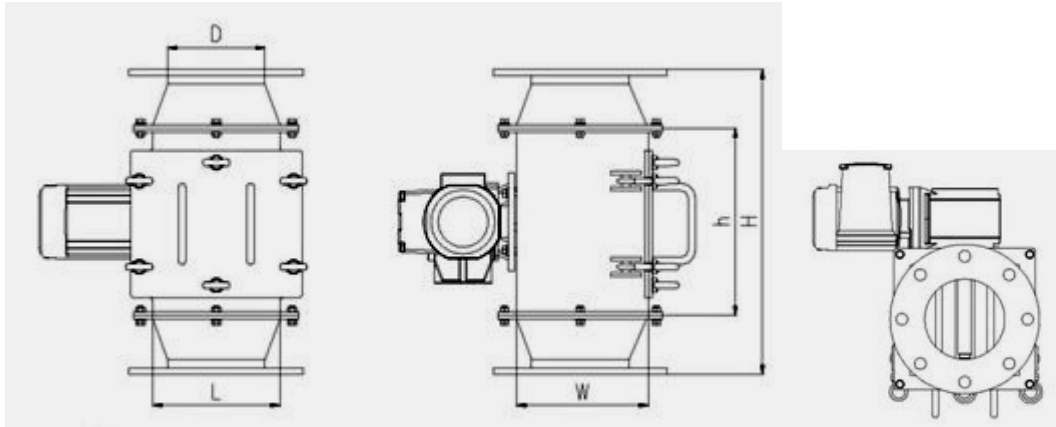
Application area:

Products are of some moisture, a little viscous and having bridging problems.

How to do cleaning?

In order to ensure perfect performance, it has to be checked periodically. Once it needs to be cleaned, please shut down the power. Then, release the door latch, draw out the magnetic core and do the wiping. Use extreme caution and wear gloves during the process.

Typical Products



Part#	Dimensions (mm)					Capacity (KW)	No. of Magnetic bars
	D	W	L	h	H		
SM-MRG150	150	205	208	300	480	0.25	7
SM-MRG200	200	255	258	350	530	0.25	9
SM-MRG250	250	305	308	400	580	0.25	11
SM-MRG300	300	244	358	450	630	0.37	13
SM-MRG350	350	405	408	500	680	0.37	15
SM-MRG2020		205	208	300		0.25	7



72 Fairbanks #100, Irvine, CA 92618, USA
Tel: (949) 4078902 Fax: (949) 812 6690

SM-MRG2525	255	258	350	0.25	9
SM-MRG3030	305	308	400	0.25	11
SM-MRG3535	355	358	450	0.37	13
SM-MRG4040	405	408	500	0.37	15

***Please give us the info below if you'd like to have a customized product:**

- a) Interface/connection type and diameter
- b) Pipeline pressure
- c) Operating temperature
- d) Installation space
- e) Magnetic field strength
- f) Characteristics & name of material; PH; Particle size; fluidity; etc
- g) Other special designs